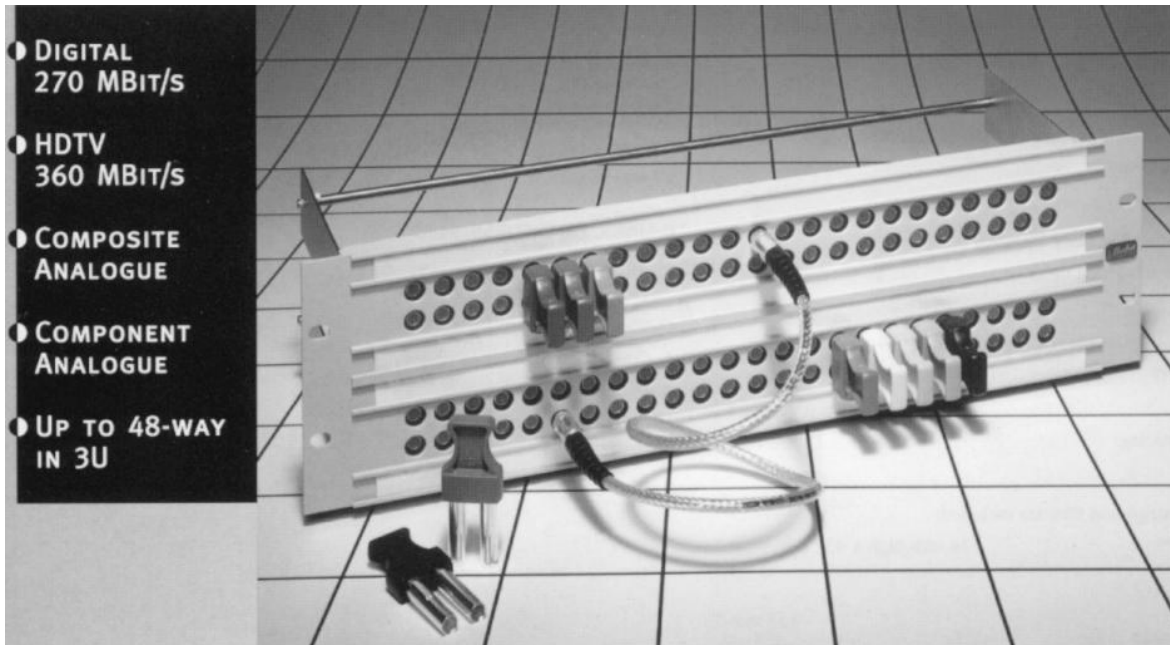


SuperMUSA Digital/Analogue Video Patch Panels

4 Row 3U



Connectors Extensive internal re-engineering of the MUSA/BNC connector guarantees superior performance from BASE BAND through to 360 Mbit/s.

Perfect connector alignment when using U-links, crucial to performance and long operational life, is achieved by Media's unique Fully Floating Connector System. This also ensures complete electrical isolation of the connectors from each other and the panel. Thick silver plating at the MUSA interface, combined with additional dielectric support for the gold-plated BNC centre pin, complete this rugged package.

Panels 3U SuperMUSA panels are available from 1 to 48-way, 4-row. Use of the narrow-pitch systems and 1U SuperMUSA U-links enable up to 48 video channels to be accommodated in a 3U panel, combined with full-height designation strips for each row. Connectors may be combined with audio or data connectors. Panels come complete with tie bar and designation strips. Custom colours and markings are available on request.

U-links and Patchcords To fully utilise the superior performance of the SuperMUSA panels it is important to install either standard pitch or narrow pitch SuperMUSA U-Links and SuperMUSA Patchcords.

The U-links have a rigid construction with internal impedance matching unachievable with floating types. SuperMUSA Patchcords combines latest technology connectors with a custom-designed digital/analogue cable to match system cabling.

SEE: VIDEO PANEL ACCESSORIES.

See overleaf for Technical Specification and Ordering Information.

SuperMUSA Digital/Analogue Video Patch Panels

SPECIFICATION

Construction

19" extruded aluminium panel to Media specification: 3U 4-row, up to 48-way

Finish

BS9.099 Media Mist-Grey Eggshell paint. Other colours to special order

Connectors

Inter-series adaptors: MUSA male (patching)/BNC female (installation)

Impedance: 75 ohms nominal

Horizontal spacing: 15.875 mm

Accessories

Designation strips and film are included:

14 mm high x 432 mm wide

Mechanical

Height 133 mm, Width 483 mm, Depth including tiebars 150 mm, Weight (approximate) 4 kg

Conforms to the protection requirements of EU Council Directive 89/336/EEC (inclusive 93/68/EEC) for EMC/RFI emission and immunity

ORDERING INFORMATION

Panels

40-way 4-row 3U SuperMUSA Video Patch Panel

VIP/340

48-way 4-row 3U SuperMUSA Video Patch Panel

VIP/348

U-links, Patchcords, Adaptors

See: Video Panel Accessories

Options on Request

1. Mixed Video/Data

2. Other numbers of ways